

## 4NCL Online Round 10

### Bolton & Worsley vs Rugeley

For the final round, Rugeley were paired against Bolton & Worsley. Another 4NCL main team used to playing in Division 3 North.

		<b>Bolton &amp; Worsley</b>	1690		<b>Rugeley</b>	1604
551	w	Hilton, Tim ( <a href="#">EpicChess93</a> )	1885	-	Whatmore, Steve ( <a href="#">SteveWhatmore</a> )	1817 c
552	b	Doherty, Paul ( <a href="#">ewaawoowaa</a> )	1738	-	Carr, Matthew ( <a href="#">mattcarr2600</a> )	1692
553	w	Lamb, Ian ( <a href="#">pawnpusher76</a> )	1568	-	Sullivan, Luke ( <a href="#">death2rooks93</a> )	1585 c
554	b	Busznyak, Arpad ( <a href="#">Arpady</a> )	1570 c	-	Wood, Ryan ( <a href="#">RyanWood01</a> )	1322 c

Most of these players have a good history behind them. Tim Hilton and Paul Doherty have been playing 4NCL and congresses all over the country for years. This player has never managed to beat Tim Hilton over the board, but he has managed to have him over a pool table. Paul is more used to playing in Open sections of congresses and rapidplays. Speaking of which the board 3 is more used to organising them and supporting his father whose also an International Arbiter. Their fourth player I have not heard mention of before.

Let's find out how the action unfolded in the final round of 4NCL online for Rugeley.

Luke – Was the first game to finish. The game opened as a King's Indian defence. My silicon friend informs me that it's the Normal Variation, Rare Defences! How can something be both normal and rare at the same time? White decided to take an aggressive stance against Luke and created a massive pawn centre, advancing the c – h pawns into the game early on. Trying to cramp up Luke's position.

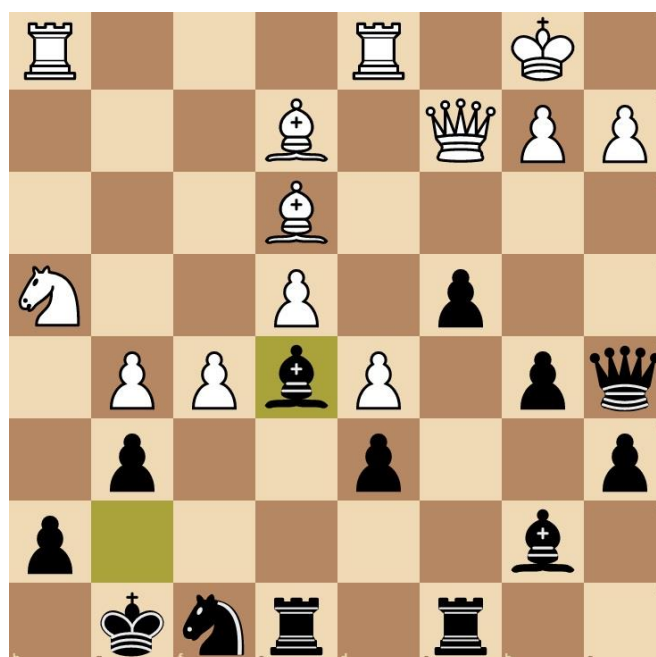


This did have Luke a little worried sadly. I was informed after the game that at this point he wasn't sure if he was better, equal or worse and not sure how to proceed. So, here's one for you, if you were playing with the black pieces how would you want to proceed?

I remember a similar conversation I had with the group chat a few weeks ago. If you can't think straight take a break, walk away, get yourself a drink and re-compose yourself. Come back fresh in mind and clear of emotions and tackle your problems.

And tackle them Luke did. Luke decided that for the moment consolidating his forces was the correct way to go and brought his knights back behind his pawns. The thing is, if you advance your pawns to far up the board, it makes them easy targets. So, with the black pieces firmly out of the way of danger, Luke started to fight fire with fire and started pushing his pawns forward to attack Whites advanced pawns in the centre.

Pawns and a knight were exchanged off in the centre and Luke began pushing his pawns on the queenside to threaten the castled king on that side. White attempted to bring more pieces over the kingside to hit Luke's position there but it was too slow and too well defended. Both players advanced and just as things were getting interesting, both players agreed a draw! Here is the final position, which side would you take and how would you continue? White to play:



Bolton & Worsley ½ Rugeley

Matt was the next game to finish. Having researched his opponent, he spotted an interesting pattern. If anyone played e4 against him, he replies d6. If anyone plays d4 on him he goes e6. So why not try that idea and get him into a French defence! Amazingly it worked.

The game opened as a French Defence - Tarrasch variation. Both sides developed their pieces well but the first problem for Matt was that black managed to get his light squared bishop. This is supposedly crucial in a French defence as its part of the core of white's attack. Matt managed to grab hold of the centre with his knight and hold the position, creating threats down the kingside.



Black brought out his knight to f6 then made the mistake of bringing the queen to b6. That was what Matt was waiting for. He took the bishop off forcing the king to take back removing the possibility of castling. Matt then sadly missed the follow up in that position.



What should Matt have played here?

The game progressed on with both sides threatening each other's pieces, Matt brought the bishop and Rook into the game trying to get them to the best squares. However, he overlooked a horrible counter attack from the enemy as Matt was taking apart the kingside, black made headway on the queenside. Then Matt overlooked a very good move.



Matt figured that here, the knight moves away or takes the bishop. The queen takes back and this position is looking equal. Trouble is the knight didn't move, queen takes knight happened. Matt can't take the queen back with the rook because then we run into mate in 2. Beautiful.

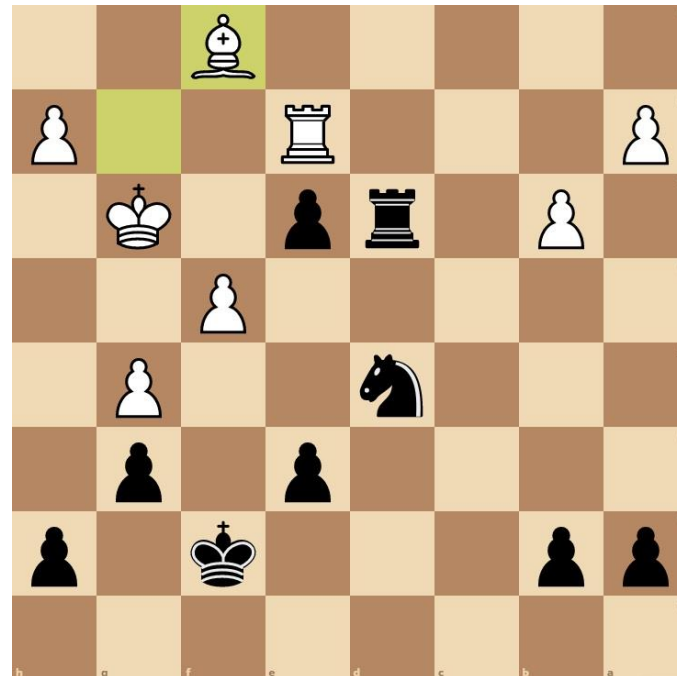
Having taken the knight and losing the Rook the final move came when black trapped Matt's queen. The only way out was to play queen takes queen and Matt heads into the endgame a whole rook down and with an easy spotted win, Matt resigned.

Bolton & Worsley 1½ - ½ Rugeley

Steve was the next game to finish. It was a queen's pawn game with white fianchettoing on the kingside. Steve built a pawn formation in the centre to block out the bishop and develop his pieces. Then the fun began. Pawns and pieces started getting traded off in the centre quite quickly. By move 20 they had reached an endgame.



White threatened Steve's knight in the centre by pushing f4. Steve had an in between move he could play. He moved the rook to threaten the queen, with the threat of losing his queen white moved it and Steve managed to hit it again, with the knight moving to c4, hitting the queen and a pawn. The pieces were shuffled around a little and both players would up exchanging queens but Steve still had the open c-file. White began thrusting his kingside pawns up the board but Steve kept everything together, when White made a mistake Steve jumped on it.

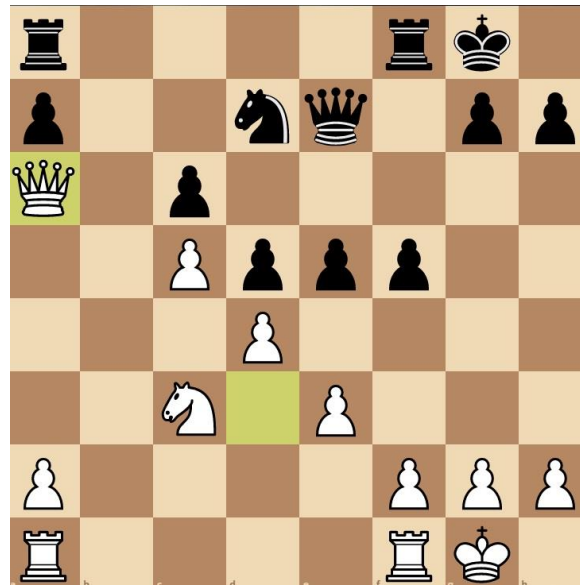


Steve played Nc3 in this position and the Rook can't move. If it does the pawn advances one square, calls a check and the rook can't be taken by the bishop as the pawns in the way. So, the King came over to defend the rook and Steve goes the exchange up. Steve then starts harassing the pawns getting the a and f pawns off the board. Trouble is so does white, advancing his king up the board to make this as hard as possible for Steve to win. Well opponents never do what you want them to.

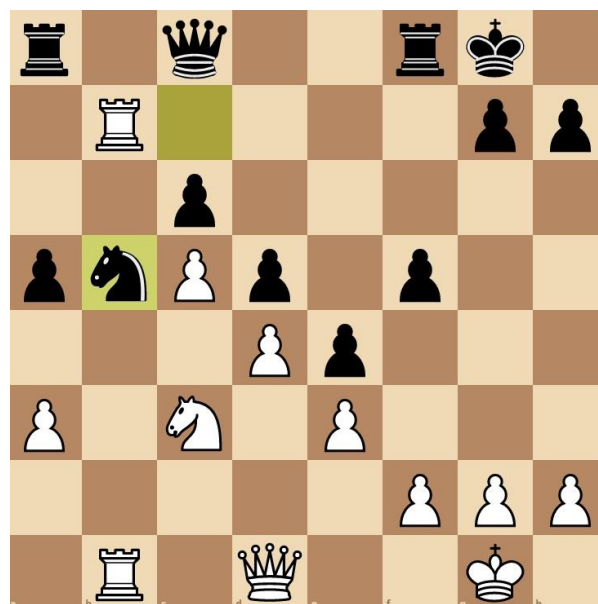
It came down to Steve having a King, Rook and two pawns vs Whites King, bishop and 1 pawn. That came off the board very quickly. White however to his merit, never gave up. That tenacity was rewarded when he managed to get Steve in a bad position and could pick up the last of Steve's pawns. According to my silicon friend a Rook and King vs Rook and Bishop is a draw. A few moves later the game reached a position checkmate can no longer occur and the Lichess software declared the game a draw.

Bolton & Worsley 2 - 1 Rugeley

It was all down to Ryan now. It was a London system opening with the centre becoming blocked early in the game. Both sets of bishops came off so it came down to a battle between knights and queens. Ryan attacked on the queenside and black decided to attack through the centre. Once both sides had castled Ryan sent his queen into the black defence to try and break it apart a little hitting the pawn chain at its weakest spot. The bottom pawn.

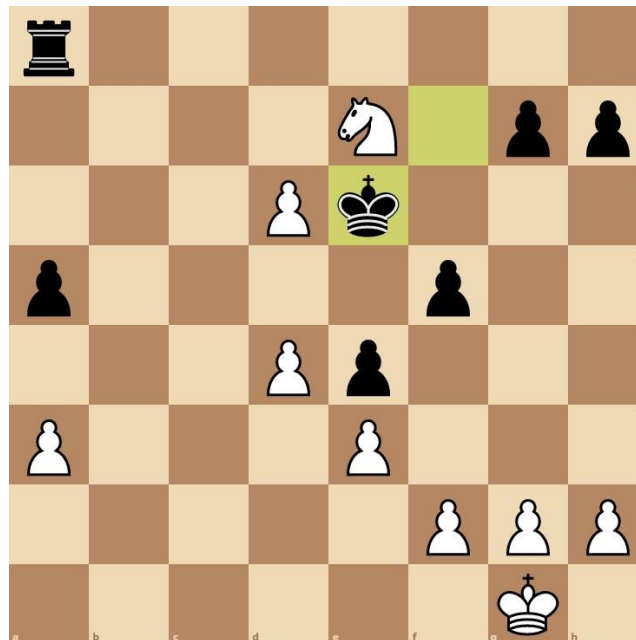


This forces the knight to go back to its starting square to hold back Ryan's attack. That also forces the rook out of the game and denies black the b file for their rook. A fact Ryan used to his advantage a few moves later. He doubled the rooks up and prepared to attack. But then counter attack time again.



The knight came in and blocked the Rooks retreat, now it's under threat from the queen and the knight could be taken for nothing. Ryan chose to go the exchange down but gained a pawn out of it when the threatened rook took the knight back and after pawn takes rook comes in. My silicon friend suggested taking in the centre with the knight. Perhaps because it threatens to fork king and queen on the next move, but we will never know.

Having taken back with the rook on b5, Ryan brought his queen to support the rook and attack black's position again. Ryan managed to get another pawn up in the centre but this served to help black's position then came the big problem. Black was able to exchange off so that the pawns could no longer support each other, he doubled one of Ryan's pawns and started to bring the king over.



Ryan started to advance his f-pawn, the d6 pawn was not long for this board though and as Ryan solidified his centre, black got the rook moving and defended the remaining pawns from the knight very easily. Black brought the king over to capture the pawn on a3, and using a combination of the rook to keep out the king and knight the a pawn went all the way down the board to a2 where Ryan's resignation was soon given.

Final score: Bolton & Worsley 3 - 1 Rugeley

My thanks to Bolton & Worsley for a good match. This is the part where I would normally wish the opposing team good luck in the next round but sadly for Division 5 this is where it all ends.

#### Division 5

			rd 1	rd 2	rd 3	rd 4	rd 5	rd 6	rd 7	rd 8	rd 9	rd 10	P	W	D	L	SB	SOS	Pts
1	Hertford	her	wim3 2½	bud 3½	csc5 2	bau1 3½	wlv 1½	mjub 4	wesc 3	nun2 2½	rgl 3	tps 2½	10	8	1	1	177	110	17
2	CSC 5	csc5	bau2 4	kesd 3½	her 2	marb 2	chw 2½	gond 2½	wlv 2	tps 4	nun2 2½	sta2 ½	10	6	3	1	170	121	15
3	Wirral League Wanderers	wlv	bln1 4	dah 2½	dod 3	baw 2½	her 2½	nun2 1½	csc5 2	wfja 3	gond 1½	uxb 1½	10	6	2	2	165	123	14
4	St Albans 2	sta2	mjub 1½	hatb 4	ecoc 3	kesd 1	ekb 1	grg 3	dah 2½	bub 3	baw 2½	csc5 3½	10	7	0	3	142	104	14
5	Uxbridge Knights 1	uxb	wfjb 3	tps 1½	wesc 1	4ge 3½	mcs 1½	sta4 4	dod 3	ekb 3½	warb 3½	wlv 2½	10	7	0	3	136	101	14
6	Gonzaga D	gond		ekb 4	wim3 3	mcs 3	bub 3	csc5 1½	chw 2	kesd 3	wlv 1½	nun2 3½	9	6	2	1	136	95	14
7	Manchester Juniors B	mjub	sta2 2½	rgl 2	nun2 2	wfja 3	tps 2	her 0	bsp 4	baw 1	mcs 2½	bub 2½	10	5	3	2	143	119	13
8	Maryport Assassins B	marb	sta3 2	wig2 2½	ydr 3½	csc5 2	baw 1	ekb 2	oxf4 3½	wesc 3	tps 1	wfja 3	10	5	3	2	143	113	13
9	Bolton & Worsley	baw	shr4 3	warb 2½	chw 3	wlv 1½	marb 3	wesc 2	nun2 1½	mjub 3	sta2 1½	rgl 3	10	6	1	3	142	117	13
10	Warwickshire Bears C	warc			grg 2	bln2 4	ecoc 1	wfjb 4	brh2 2½	brh1 3	bau1 2½	kesd 2½	8	6	1	1	96	59	13
11	Temple Sutton	tps	sabc 2½	uxb 2½	bau1 1	bub 2½	mjub 2	rgl 2	warb 2½	csc5 0	marb 3	her 1½	10	5	2	3	130	119	12
12	Nottingham University 2	nun2	she 4	bub 2	mjub 2	bud 2½	kesd 3	wlv 2½	baw 2½	her 1½	csc5 1½	gond ½	10	5	2	3	129	122	12
13	Wessex Some Stars C	wesc		she 3	uxb 3	bsp 4	bau1 3	baw 2	her 1	marb 1	chw 2	warb 2½	9	5	2	2	129	106	12
14	Kent KJCA Kestrels D	kesd	wfja 3½	csc5 ½	warb 3½	sta2 3	nun2 1	bau1 2½	rgl 2	gond 1	wig2 3½	warc 1½	10	5	1	4	123	121	11
15	Doughnuts of Doom	dod	brh2 3½	ydr 2	wlv 1	sta3 2	sta4 4	warb 1½	uxb 1	grg 2½	4ge 2	wat3 3	10	4	3	3	99	103	11
16	Rugeley	rgl	hatb 3½	mjub 2	bub ½	bau2 3½	brh1 2½	tps 2	kesd 2	chw 2½	her 1	baw 1	10	4	3	3	98	107	11
17	Wigston 2	wig2	brh1 2	marb 1½	sabc 2	ecoc 2	oxf4 1½	brh2 3	bau1 2	bsp 3	kesd ½	chw 2½	10	3	5	2	98	94	11
18	Young Dragons	ydr	mcs 3	dod 2	marb ½	brh1 1	bau2 4	bsp 1½	bud 3½	bau1 1	ecoc 3	ekb 2½	10	5	1	4	81	88	11
19	4 Gems	4ge	wqb2 2	bau1 1½	brh1 ½	uxb ½	sabc 3	bau2 3½	mcs 3	warb 0	dod 2	brh2 2½	10	5	1	4	79	88	11
20	Watford Juniors A	wfja	kesd ½	bau2 2	bln2 4	mjub 1	har4 4	brh1 3	ecoc 4	wlv 1	wat3 3	marb 1	10	5	1	4	70	88	11
21	Bishop Trojans	bau1	har4 4	4ge 2½	tps 3	her ½	wesc 1	kesd 1½	wig2 2	ydr 3	warc 1½	oxf4 2	10	4	2	4	101	114	10
22	Chess Warriors	chw	grg 3	bsp 4	baw 1	dah 4	csc5 1½	mcs 2½	gond 2	rgl 1½	wesc 2	wig2 1½	10	4	2	4	100	113	10
23	Warwickshire Bears B	warb	mjuic 3	baw 1½	kesd ½	sabc 4	dah 2½	dod 2½	tps 1½	4ge 4	uxb ½	wesc 1½	10	5	0	5	90	107	10
24	Battersea Pawnbreakers	bsp	wat3 2	chw 0	sta3 4	wesc 0	wqb2 2	ydr 2½	mjub 0	wig2 1	ekb 2	grg 2½	10	4	2	4	90	99	10
25	Bristol University B	bub	bln2 4	nun2 2	rgl 3½	tps 1½	gond 1	sta3 3	ekb 2	sta2 0	dah 3	mjub 1½	10	4	2	4	85	106	10
26	Oxford 4	oxf4			hatb 4	shr4 4	wig2 1½	bud 4	marb ½	dah ½	brh1 4	bau1 2	8	4	2	2	83	75	10

And that concludes the season. My congratulations to Hertford (our round 9 opponents) for winning the league. Fantastic job.

On a personal note, I think the best team name for this competition has to go to the Doughnuts of Doom. Excellent team name.

And of course, thanks to my silicon friend for pointing out the names of openings and showing us the best moves when we couldn't find them.



Rugeley finish 16<sup>th</sup> in the league. My thanks and congratulations to all our players for their great work and for putting up with me as team captain, it has been a genuine pleasure to have this

adventure with you all. It seems 4NCL plan to run another one of these leagues in the near future. Until then club internal tournaments will resume on lichess on Tuesdays at 7:30pm.

The links to the round 10 games can be found here:

Steve: <https://lichess.org/tmFhBt3Q/black>

Matt: <https://lichess.org/iZl6U7>

Luke: <https://lichess.org/D8Q97tgg/black>

Ryan: <https://lichess.org/5ffnwVKn/white>