

4NCL Online Round 4

Bishop Knights vs Rugeley

In round 4 of 4NCL online we took on a team from the Bishop Auckland chess club Bishop Knights.

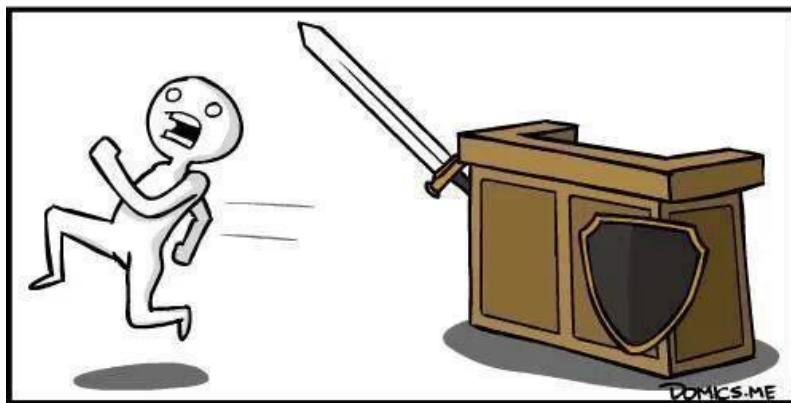
On paper, we looked to have an edge on the grades. But this is online chess, nothing is usually what it first seems. All I knew of our opponents was that they are using their ECF grades converted (that's what the c next to the rating means).

		<b>Bishop Knights</b>			<b>Rugeley</b>	
			1447			1604
621	w	Siddle, Michael ( <i>Bishopfellwalker</i> )	1562 c	-	Whatmore, Steve ( <i>SteveWhatmore</i> )	1817 c
622	b	Sides, David ( <i>play75</i> )	1547 c	-	Carr, Matthew ( <i>mattcarr2600</i> )	1692
623	w	Clynes, Chris ( <i>ChrisClynes</i> )	1435 c	-	Sullivan, Luke ( <i>death2rooks93</i> )	1585 c
624	b	Burnett, John ( <i>brandonborn</i> )	1247 c	-	Wood, Ryan ( <i>RyanWood01</i> )	1322 c

So, after the usual words of inspiration from the captain and good lucks the duels began.

Luke's was the first game to finish. His opponent opened with an unusual move 1.Nc3. The game quickly went from unusual to a Vienna gambit position. One thing for certain if someone plays a gambit opening, you're in for an attacking game. Thing is Luke likes to be on the attack also, one things for sure, this was not going to be boring.

On move 9 Luke's opponent sacrificed his bishop of f7. Possibly thinking that there was a chance to come racing in with his queen bishop and the other knight. Luke soon put a stop to that though. The opponent had missed the:



**COUNTER ATTACK**



Black to play. What did white miss in this position?

White remained on the attack, bringing as many pieces into Luke's position as he could. Luke kept the position very solid, not allowing his opponent an easy shot at anything. Eventually white over-extended his attack trying to break Luke's position and missed a back-rank mate. Well done Luke.

#### Rugeley 1-0 Bishop Knights

Ryan's was the next game to finish. London system opening with the opponent attempting to deal with the problems white poses symmetrically. On move 9 the position of the pieces was very similar. By move 15 Ryan had a good advantage and launched into an attack that saw him go two pawns up and making his c and d pawns semi passed. Then while the opponent wanted to develop his knight it gave Ryan the chance to threaten it with his d pawn and after that to make it a completely passed pawn, backed up by a rook and knight.



Trouble is having a passed pawn means trouble for your opponent, the trouble is promoting it. One little tip I was once told is that if you have a problem with a passed pawn, put a knight in the way of it. It's able to jump to so many squares around it and intercept it a move later if it does have to move. So that's what the opponent did, blocked the pawns advance with the knight on e6 and attempted to tie down Ryan's pieces to look after it and find some safety for the king on the kingside. Ryan had other plans for the black king though and was able to break open the kingside by pushing the pawn on f4, open the king ready for attacks by his rooks. The attack proved too much for black, overloading his pieces and being given the choice between lose the rook or knight, the opponent opted to resign.

A very nice game Ryan, well done.

Rugeley 2-0 Bishop Knights.

Third game to finish was Matt's and what a roller coaster of a game this was. Another Symmetrical London System with Matt opting to double a few pawns early on. The idea being that it could open lines for the Rooks to attack later but did cause a few questions with regard to king safety. So, opting to double pawns then came time to sacrifice one of the knights for an attack on the enemy king. This resulted in White being a pawn up but sadly nothing more.



Initial reaction was get out of that!

Trouble is why is it every time those words are said, they do. Black found a way out so that white was up a pawn but nothing more. The pieces along the h file were swapped off and black was a pawn down but sadly not out. As black developed his rook, Matt tried to do the same. Trouble is it overlooked a devastating counter punch from the opponent.



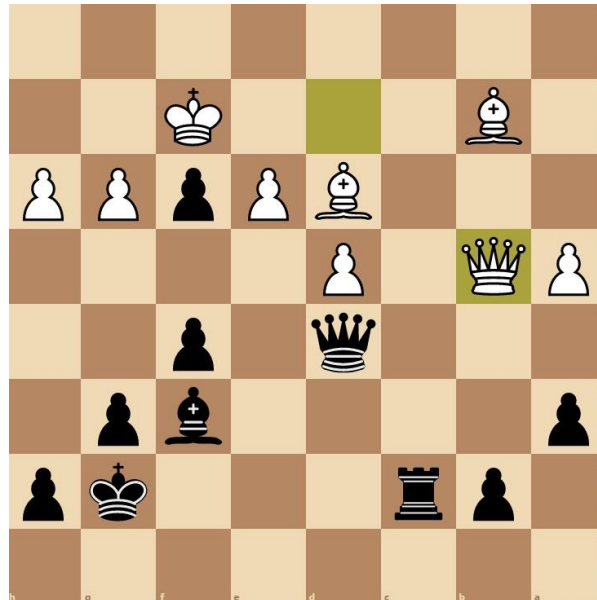
In this position Matt played Rc1 but this allows the knight to be trapped with g5. So a few moves later white loses the knight but does get two pawns up for it with a strong pawn centre to boot. Time for a few dirty tricks. The black rook heads towards the centre pawns and so those pawns have to start coming forward. The closer they get to the queening square, the more likely black is going to have to sacrifice one of his pieces to stop the threat. The pressure began to build for both players. Thankfully for Rugeley black cracks first and under pressure the opponent decides to return the knight and gets a passed pawn on the queenside. Matt goes on the attack via the kingside and that pawn on the g file starts to run for the queening square also. With the white king guarding black's queenside pawns that threat gets nullified and Matts rook is preventing the opposing king from getting to the advancing g-pawn. Black tries to get the Rook back in time but it's too late. One square off queening the pawn black resigns.

### Rugeley 3-0 Bishop Knights

Finally, it was down to Steve. The opponent went with the English opening which offers white good middlegame chances. Steve counters it by pushing his kingside pawns forward and developing the minor pieces into the centre, attempting to block out the bishop g2 and making it very hard for white to attack. When the time came and everything was ready, Steve launched his own attack against the white queenside.



The knight on d7 goes in and takes the pawn, if it gets taken back then it opens more lines for black. Steve continued the attack getting rid of a rook up the corner on a1 and bringing the rest of his pieces to bear down the c and b file. White looks very disorganised but the defence is holding for now. White is certainly on the back foot to Steve's attack. After a few more exchanges we wind up in a position that Steve is the exchange and a pawn up. White begins trying to construct a defence with that he has left but time is now becoming a factor for both players. One has 1 minute left, Steve has 5 minutes left. Now the 15 seconds per move increment becomes critical.



White begins trying to get into Steve's position with the queen and put the pressure on, eventually allowing the bishop and queen to get on the long diagonal. With time trouble being a factor for both players now, a blunder occurred and a draw was accepted by both players.

Final score Rugeley 3½ - ½ Bishop Knights.

League tables on the next page. If anyone wants to see these games they are at the following URL's

Steve - <https://lichess.org/lKiHKLeZ/black>

Matt - <https://lichess.org/78qrh1CLuZt0>

Luke - <https://lichess.org/RgFOxPyV/black>

Ryan - <https://lichess.org/Bv1rasCJ>

It was a good evening, my thanks to all players involved. See you in the next edition.

Matthew Carr  
Rugeley 4NCL captain

## Division 5

			rd 1	rd 2	rd 3	rd 4	P	W	D	L	GP	Pts
1	Wirral League Wanderers	wlw	<a href="#">bln1</a> 4	<a href="#">dah</a> 2½	<a href="#">dod</a> 3	<a href="#">baw</a> 2½	4	4	0	0	12	8
2	Hertford	her	<a href="#">wim3</a> 2½	<a href="#">bud</a> 3½	<a href="#">csc5</a> 2	<a href="#">bau1</a> 3½	4	3	1	0	11½	7
3	Chess Warriors	chw	<a href="#">grg</a> 3	<a href="#">bsp</a> 4	<a href="#">baw</a> 1	<a href="#">dah</a> 4	4	3	0	1	12	6
4	CSC 5	csc5	<a href="#">bau2</a> 4	<a href="#">kesd</a> 3½	<a href="#">her</a> 2	<a href="#">marb</a> 2	4	2	2	0	11½	6
5	Kent KJCA Kestrels D	kesd	<a href="#">wfja</a> 3½	<a href="#">csc5</a> ½	<a href="#">warb</a> 3½	<a href="#">sta2</a> 3	4	3	0	1	10½	6
6	Nottingham University 2	nun2	<a href="#">she</a> 4	<a href="#">bub</a> 2	<a href="#">mjub</a> 2	<a href="#">bud</a> 2½	4	2	2	0	10½	6
7	Gonzaga D	gond		<a href="#">ekb</a> 4	<a href="#">wim3</a> 3	<a href="#">mcs</a> 3	3	3	0	0	10	6
8	Bishop Trojans	bau1	<a href="#">har4</a> 4	<a href="#">4ge</a> 2½	<a href="#">tps</a> 3	<a href="#">her</a> ½	4	3	0	1	10	6
9	Wessex Some Stars C	wesc		<a href="#">she</a> 3	<a href="#">uxb</a> 3	<a href="#">bsp</a> 4	3	3	0	0	10	6
10	Bolton & Worsley	baw	<a href="#">shr4</a> 3	<a href="#">warb</a> 2½	<a href="#">chw</a> 3	<a href="#">wlw</a> 1½	4	3	0	1	10	6
11	Maryport Assassins B	marb	<a href="#">sta3</a> 2	<a href="#">wig2</a> 2½	<a href="#">ydr</a> 3½	<a href="#">csc5</a> 2	4	2	2	0	10	6
12	Manchester Juniors B	mjub	<a href="#">sta2</a> 2½	<a href="#">rgl</a> 2	<a href="#">nun2</a> 2	<a href="#">wfja</a> 3	4	2	2	0	9½	6
13	Temple Sutton	tps	<a href="#">sabc</a> 2½	<a href="#">uxb</a> 2½	<a href="#">bau1</a> 1	<a href="#">bub</a> 2½	4	3	0	1	8½	6
14	Bristol University B	bub	<a href="#">bln2</a> 4	<a href="#">nun2</a> 2	<a href="#">rgl</a> 3½	<a href="#">tps</a> 1½	4	2	1	1	11	5
15	Rugeley	rgl	<a href="#">hatb</a> 3½	<a href="#">mjub</a> 2	<a href="#">bub</a> ½	<a href="#">bau2</a> 3½	4	2	1	1	9½	5
16	Broken Herts 1	brh1	<a href="#">wig2</a> 2	<a href="#">sta3</a> 0	<a href="#">4ge</a> 3½	<a href="#">ydr</a> 3	4	2	1	1	8½	5
17	Warley and Quinborne	wqb2	<a href="#">4ge</a> 1	<a href="#">har4</a> 1½	<a href="#">mjuc</a> 3½	<a href="#">brh2</a> 4	4	2	0	2	10	4
18	St Albans 2	sta2	<a href="#">mjub</a> 1½	<a href="#">hatb</a> 4	<a href="#">ecoc</a> 3	<a href="#">kesd</a> 1	4	2	0	2	9½	4
19	Uxbridge Knights	uxb	<a href="#">wfjb</a> 3	<a href="#">tps</a> 1½	<a href="#">wesc</a> 1	<a href="#">4ge</a> 3½	4	2	0	2	9	4
20	Warwickshire Bears B	warb	<a href="#">mjuc</a> 3	<a href="#">baw</a> 1½	<a href="#">kesd</a> ½	<a href="#">sabc</a> 4	4	2	0	2	9	4
21	Bude Surfers	bud	<a href="#">brh3</a> 3	<a href="#">her</a> ½	<a href="#">har4</a> 3½	<a href="#">nun2</a> 1½	4	2	0	2	8½	4
22	Doughnuts of Doom	dod	<a href="#">brh2</a> 3½	<a href="#">ydr</a> 2	<a href="#">wlw</a> 1	<a href="#">sta3</a> 2	4	1	2	1	8½	4
23	Oxford 4	oxf4			<a href="#">hatb</a> 4	<a href="#">shr4</a> 4	2	2	0	0	8	4
24	MCS Oxford Juniors	mcs	<a href="#">ydr</a> 1	<a href="#">brh2</a> 3½	<a href="#">shr4</a> 2½	<a href="#">gond</a> 1	4	2	0	2	8	4
25	Darnall & Handsworth	dah	<a href="#">ecoc</a> 3	<a href="#">wlw</a> 1½	<a href="#">wat3</a> 3	<a href="#">chw</a> 0	4	2	0	2	7½	4
26	East Kilbride	ekb		<a href="#">gond</a> 0	<a href="#">brh3</a> 4	<a href="#">wat3</a> 3	3	2	0	1	7	4