

## 4NCL Online Round 8

### Chess Warriors vs Rugeley

Round 8 has come and Rugeley were paired against a strong junior team called Chess Warriors. It looks to be a London based team with players in the ECF Academy program. Fortunately for Rugeley we have one of those ourselves. They out grade us on 3 boards but in this competition, anything can happen and happen it did.

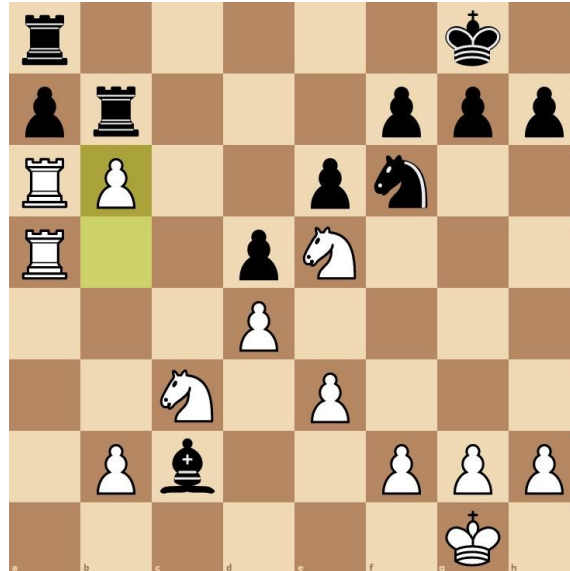
		<b>Chess Warriors</b>			<b>Rugeley</b>	
		1626			1604	
561	w	Shah, Kian <i>(kian1shah)</i>	1735 e	-	Whatmore, Steve <i>(SteveWhatmore)</i>	1817 c
562	b	Gurjar, Roshan <i>(roshpro)</i>	1712 e	-	Carr, Matthew <i>(mattcarr2600)</i>	1692
563	w	Vyas, Alisha <i>(BKALisha)</i>	1675 e	-	Sullivan, Luke <i>(death2rooks93)</i>	1585 c
564	b	Gurjar, Siena <i>(ameyag)</i>	1382 e	-	Wood, Ryan <i>(RyanWood01)</i>	1322 c

Ryan was the first game to finish. It was a London System position with c4 thrown in for good measure. I've heard of this kind of development before, trying to take more of the attack to the opponent with the comfort of having the bishop on active square. The queens were traded off early but this allows the a file rook to come into the game. Which it did in spectacular fashion.



Black has just played Na6 so now Ryan uses a deadly little combination. He takes the central d pawn which opens a discovered attack on the knight so when the c pawn takes back he plays Bxa6 and after pawn takes the rook is in the game and well among the opponents position. Both players castled and then two rooks come over to the a file. Pressure building on the a pawn. Ryan went on the attack, starting with the bishop coming in and attacking the blacks dark squared bishop. With

most of Ryan's pawns on dark squares that bishop could become a problem so it was swapped off and now the pressure comes as the b pawn starts to run. Blacks targeting of it only allows it to advance even further being always defended by a combination of rooks and knight. Fatally that running pawn becomes the centre of black's problems as when it got to b6 black got in a lot of trouble.



This is interesting, no matter how black responds to this, it looks like Ryan goes a rook up. Have a look at the possibilities yourself and see what you think.

The opponent chose to play Kf8 in this position, Ryan took on the 7<sup>th</sup> rank with the rook and after the rook on the 7<sup>th</sup> recaptures black manages to get a rook to block the pawns advance. Ryan turns his attention over to the kingside attacking the pawn right in front of the king and defended by the knight. Ryan plays Rc7, with the threat of mate in 2 if black takes the pawn. A few more moves saw the Rook on a8 and the pawn advance to b7. This is where the threat of mate is still on and black falls into it. Black plays Rxb7, then Ra8. The only way to slow down the mate is to play Rook back and be taken then knight back and be checkmated because the knight is stopping the king escaping. Well played Ryan.

#### Rugeley 1 – 0 Chess Warriors

Matt was the next game to finish. Ryan advised before the game that this player likes to play the Sicilian against e4 and Matt had seen that this guy fares quite well against d4 openings. So, he dusted off one of his old favourites the Grand Prix Attack. The opening was standard, and looked drawn for both sides as they got out of the opening. Matt had his bishop locked up the corner at the start but it was always threatening to come charging out if black made a mistake.



The bishop may be locked but the centre is pretty much closed also. Black must defend those pawns with pieces otherwise Matt can start coming through the centre. Matt decided to try going for the kingside attack. The Pawn went on to f5, allowing a square for the knight to go to when needed. It wound up being a bishop that went there to attack the enemy queen then bringing the last rook over from the a file to defend the knight as a black rook was staring it down. Giving the white queen a little more freedom to move.

Matt's pieces started getting closer and closer to the enemy king. After a few trades off Matt's bishop and queen were starting to threaten it and thinking the attack looked good Matt declined the draw offer. This proved to be a mistake as a few moves later Matt allowed a pin on his king and Rook.

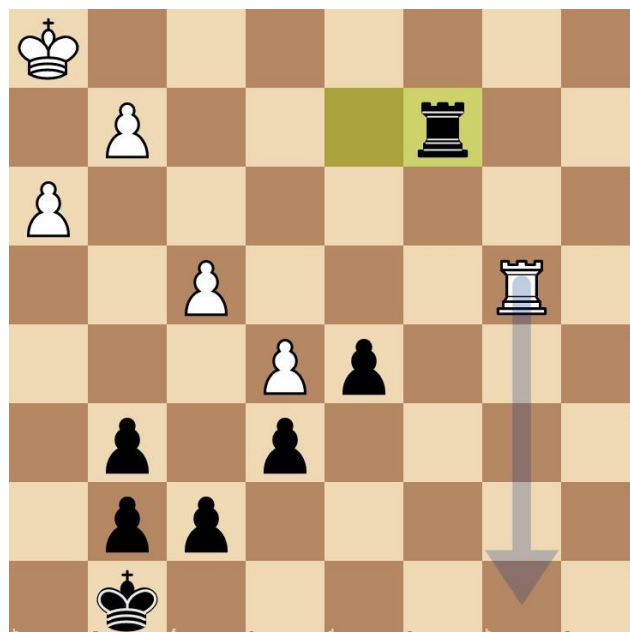


The attack wasn't as bad as Matt feared. Just break the pin with the g3 pawn and when the Rook is taken just check with the queen and capture the bishop. Sadly, Matt missed it and immediately played the queen check missing that the pawn can come up to protect the king and there are no good squares to move the queen to so the rook drops. It was just a vacuum for black after that ripping Matts position to pieces and with no threats on the black king and no way to stop the black pawn on d4 from queening Matt resigned.

Steve was the next game to finish, very close to Matt's. It was a Caro-Kann Defense: Advance Variation. The black white squared bishop was traded off for the knight and Steve took an early lead in the centre going a pawn ahead. So, White began an attack down the kingside to try and get some compensation for the central loss.



Steve developed his pieces, not wanting to give up his other bishop for a knight. The game went on with both players developing their pieces and castling kingside. Whites pointing down the centre and Steve defending a potential checkmate with the white queen and bishop pointing down at the castled kingside. Steve attacked on the queenside and after deflecting the white queen over to there went through the centre with his knight. Both players traded in the centre with everything pointing down it now. Mass trade off's ensued leaving both sides with pawns and one rook each, one of Steve's pawns though was passed.



Steve managed to get the d pawn all the way to d2 but the enemy rook managed to get behind it. White was unable to make progress to break into Steve's position and Steve would never be able to move the pawn forward anymore. Both players agreed a draw on move 46 after repeating twice.

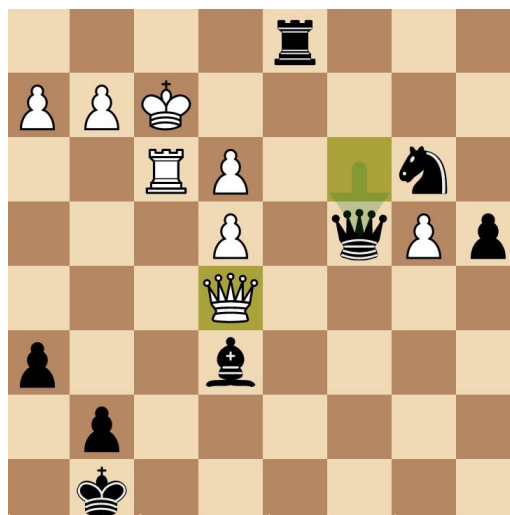
### Rugeley 1½ - 1½ Chess Warriors

It was all down to Luke now. Luke played the Philidor Defence, Lion variation. Both players got their pieces out and poised to attack each other. With Luke, an attack can spring up from anywhere, at any time. Which is what happened. White started a pawn push on the queenside but Luke found a chance to strike back.

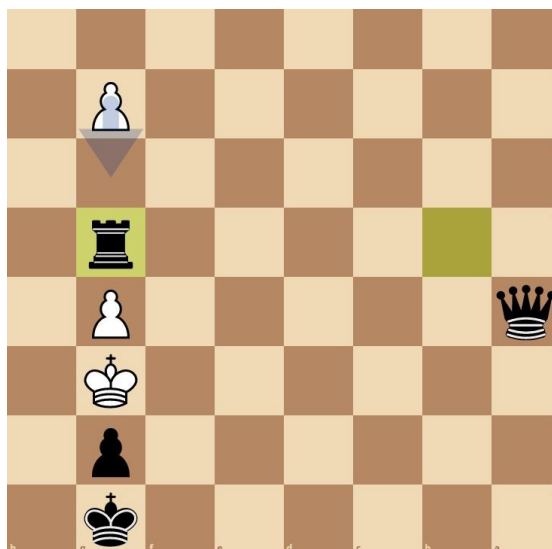


Luke played b5 here pushing the bishop back to b3 and went on with a5. The opponent decided to bring the knight back to defend the attacked pawn but missed that the pawn could walk one square forward and trap the bishop giving it nowhere to go except to sacrifice itself and that's what it did. The bishop took the pawn on f7 and Luke may lose the right to castle, but is a bishop up.

White started to bring his pieces forward, maybe hoping to get a shot at Luke's king. A discovered attack on the white queen later and Luke has the open file and a knight in the enemy position. Luke's attack just keeps coming the idea being as he's up a piece just swap off and enter the endgame a piece up. White starts having to defend very carefully.



It looks like Luke has a strong attack here but must do it very carefully. One false move and White could get himself back in the game. Luke threatened the king and began taking the pawn shield around it apart. Once like went another pawn up the queens were traded off and the final mistake came when Luke was able to pin the Rook to the king. After that came off Luke queened a pawn and found himself in this position.



Luke had this exact position against David Howell in the Simultaneous display back at Christmas. David called stalemate in this one but had a single pawn move. When that was played the queen comes in and delivers the mate. I imagine that must have felt good to use a tactic that was once used on him.

Final score Rugeley 2½ - 1½ Chess Warriors

With two rounds to go Rugeley finds itself high up the league table in 8<sup>th</sup> place. Thanks everyone.

#### Division 5

		rd 1	rd 2	rd 3	rd 4	rd 5	rd 6	rd 7	rd 8	P	W	D	L	GP	Pts	
1	Wirral League Wanderers	wlw	<a href="#">bln1</a> 4	<a href="#">dah</a> 2½	<a href="#">dod</a> 3	<a href="#">baw</a> 2½	<a href="#">her</a> 2½	<a href="#">nun2</a> 1½	<a href="#">csc5</a> 2	<a href="#">wfja</a> 3	8	6	1	1	21	<b>13</b>
2	CSC 5	csc5	<a href="#">bau2</a> 4	<a href="#">kesd</a> 3½	<a href="#">her</a> 2	<a href="#">marb</a> 2	<a href="#">chw</a> 2½	<a href="#">gond</a> 2½	<a href="#">wlw</a> 2	<a href="#">tps</a> 4	8	5	3	0	22½	<b>13</b>
3	Hertford	her	<a href="#">wim3</a> 2½	<a href="#">bud</a> 3½	<a href="#">csc5</a> 2	<a href="#">bau1</a> 3½	<a href="#">wlw</a> 1½	<a href="#">mjub</a> 4	<a href="#">wesc</a> 3	<a href="#">nun2</a> 2½	8	6	1	1	22½	<b>13</b>
4	Nottingham University 2	nun2	<a href="#">she</a> 4	<a href="#">bub</a> 2	<a href="#">mjub</a> 2	<a href="#">bud</a> 2½	<a href="#">kesd</a> 3	<a href="#">wlw</a> 2½	<a href="#">baw</a> 2½	<a href="#">her</a> 1½	8	5	2	1	20	<b>12</b>
5	Bolton & Worsley	baw	<a href="#">shr4</a> 3	<a href="#">warb</a> 2½	<a href="#">chw</a> 3	<a href="#">wlw</a> 1½	<a href="#">marb</a> 3	<a href="#">wesc</a> 2	<a href="#">nun2</a> 1½	<a href="#">mjub</a> 3	8	5	1	2	19½	<b>11</b>
6	Gonzaga D	gond		<a href="#">ekb</a> 4	<a href="#">wim3</a> 3	<a href="#">mcs</a> 3	<a href="#">bub</a> 3	<a href="#">csc5</a> 1½	<a href="#">chw</a> 2	<a href="#">kesd</a> 3	7	5	1	1	19½	<b>11</b>
7	Maryport Assassins B	marb	<a href="#">sta3</a> 2	<a href="#">wig2</a> 2½	<a href="#">ydr</a> 3½	<a href="#">csc5</a> 2	<a href="#">baw</a> 1	<a href="#">ekb</a> 2	<a href="#">oxf4</a> 3½	<a href="#">wesc</a> 3	8	4	3	1	19½	<b>11</b>
8	Rugeley	rgl	<a href="#">hatb</a> 3½	<a href="#">mjub</a> 2	<a href="#">bub</a> ½	<a href="#">bau2</a> 3½	<a href="#">brh1</a> 2½	<a href="#">tps</a> 2	<a href="#">kesd</a> 2	<a href="#">chw</a> 2½	8	4	3	1	18½	<b>11</b>
9	St Albans 2	sta2	<a href="#">mjub</a> 1½	<a href="#">hatb</a> 4	<a href="#">ecoc</a> 3	<a href="#">kesd</a> 1	<a href="#">ekb</a> 1	<a href="#">grg</a> 3	<a href="#">dah</a> 2½	<a href="#">bub</a> 3	8	5	0	3	19	<b>10</b>
10	Temple Sutton	tps	<a href="#">sabc</a> 2½	<a href="#">uxb</a> 2½	<a href="#">bau1</a> 1	<a href="#">bub</a> 2½	<a href="#">mjub</a> 2	<a href="#">rgl</a> 2	<a href="#">warb</a> 2½	<a href="#">csc5</a> 0	8	4	2	2	15	<b>10</b>
11	Uxbridge Knights 1	uxb	<a href="#">wfjb</a> 3	<a href="#">tps</a> 1½	<a href="#">wesc</a> 1	<a href="#">4ge</a> 3½	<a href="#">mcs</a> 1½	<a href="#">sta4</a> 4	<a href="#">dod</a> 3	<a href="#">ekb</a> 3½	8	5	0	3	21	<b>10</b>
12	Warwickshire Bears B	warb	<a href="#">mjuc</a> 3	<a href="#">baw</a> 1½	<a href="#">kesd</a> ½	<a href="#">sabc</a> 4	<a href="#">dah</a> 2½	<a href="#">dod</a> 2½	<a href="#">tps</a> 1½	<a href="#">4ge</a> 4	8	5	0	3	19½	<b>10</b>

Find the games at the following URL's

Steve – <https://lichess.org/eIS7HHRy/black>

Matt – <https://lichess.org/OG0LaQoX>

Luke – <https://lichess.org/j3VFsjsv/black>

Ryan – <https://lichess.org/QR1Sg5Pa>